

MONTHLY MEMBERSHIP PROGRESS REPORT

LOCATION INDIA

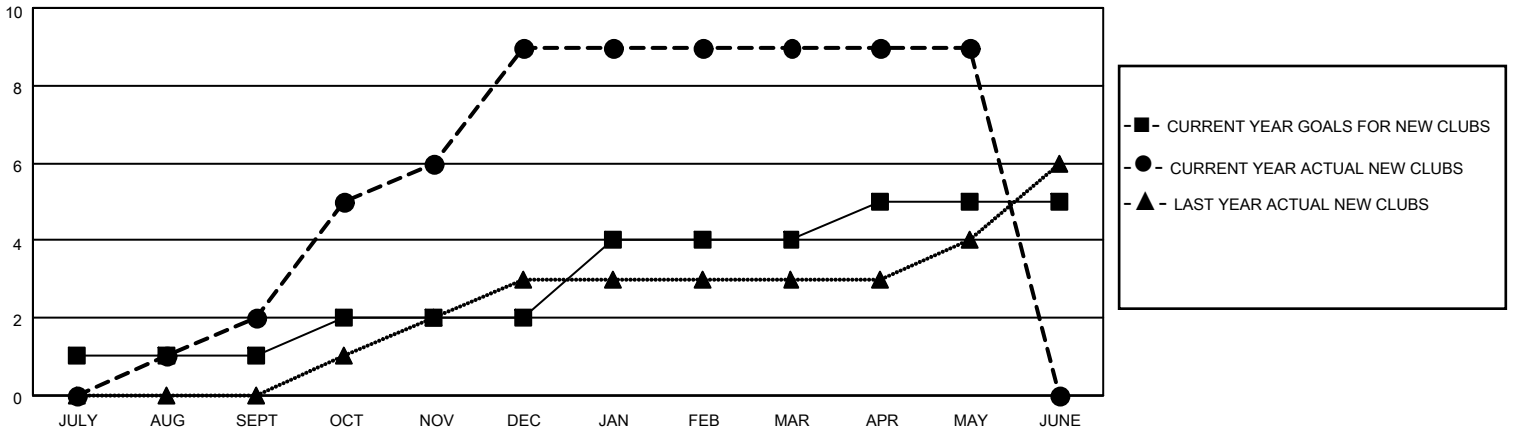
District 320 F

Results as of: 5/31/2021

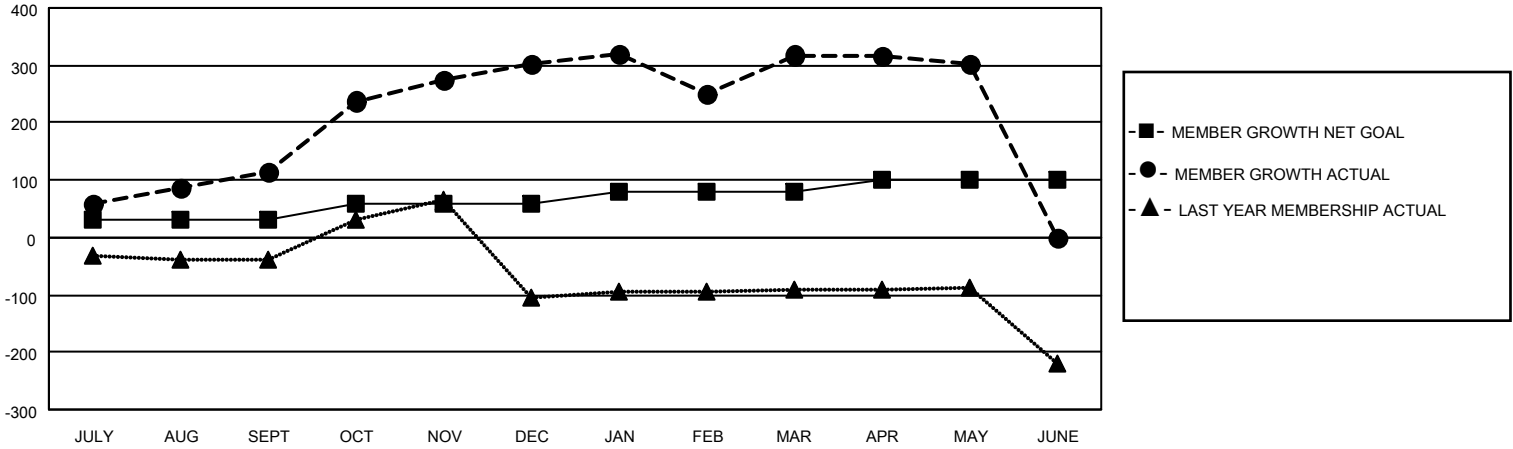
Clubs			
RESULTS FOR 2020-2021			
QUARTER	NEW CLUB GOAL	NEW CLUBS	DROPPED CLUBS
JULY/AUG/SEPT	1	2	1
OCT/NOV/DEC	1	7	0
JAN/FEB/MAR	2	0	4
APR/MAY/JUNE	1	0	0

Members			
RESULTS FOR 2020-2021			
QUARTER	MEMBER GROWTH NET GOAL	MEMBER GROWTH ACTUAL	DROPPED MEMBERS ACTUAL (including transfers)
JULY/AUG/SEPT	30	175	55
OCT/NOV/DEC	30	341	151
JAN/FEB/MAR	20	96	80
APR/MAY/JUNE	20	28	43

GOALS AND ACTUAL NEW CLUBS CUMULATIVE



GOALS AND ACTUAL MEMBERS CUMULATIVE



DROPPED CLUBS: 5	59 CLUBS OF 81 ADDED 1 OR MORE NEW MEMBERS	<u>GENDER DISTRIBUTION</u>
<u>DROPPED MEMBERS</u>	CLICK HERE FOR CUMULATIVE MEMBERSHIP DATA	MALE 2,045 (76.71%)
DECEASED 18		FEMALE 621 (23.29%)
CLUB CANCELLED 73		TOTAL FAMILY UNIT MEMBERS 1,040
OTHER 238		FAMILY MEMBERS PAYING HALF DUES 619
TOTAL 329		